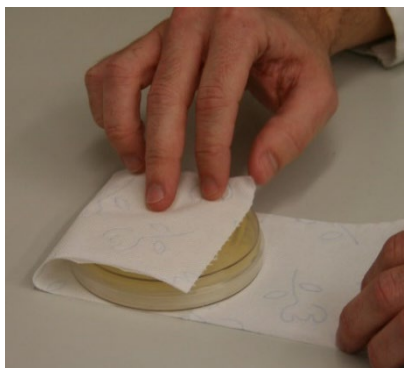


### Guide for sending strains to the CECT

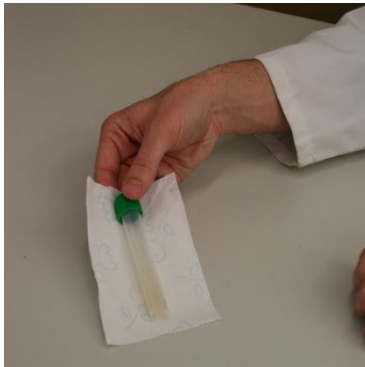
This guide is addressed to users sending strains for deposit (in any of its modalities) or for any other services offered by the CECT (characterization, identification, lyophilisation...).

1. The main receptacle containing the strains should be impermeable (e.g., tubes with a stopper or plates sealed with parafilm) and should be wrapped in absorbent material in sufficient quantity to absorb the content in case of breakage (e.g. kitchen paper, toilet paper ...).
2. To protect the culture, we recommend covering it with bubble wrap.
3. Transport of risk group 2 strains assigned to UN 3373 “Biological substance, Category B” must follow the Packing Instruction P650. For these, a second waterproof wrapping is mandatory (e.g. a larger tube or a sealed bag).
4. In all cases the outer packaging must be rigid (box or tube) and filled with packaging material (e.g. packaging filler or paper) to prevent movement of the samples within the package.

### Petri plates packaging



### Tubes packaging



### Outer packaging



Detailed information on the transport of biological substances can be found in the section "Documentation-> Other documents" at [www.cect.org](http://www.cect.org).

Label the package as "Section Bacteria" or "Section Fungi and Yeasts" as appropriate.